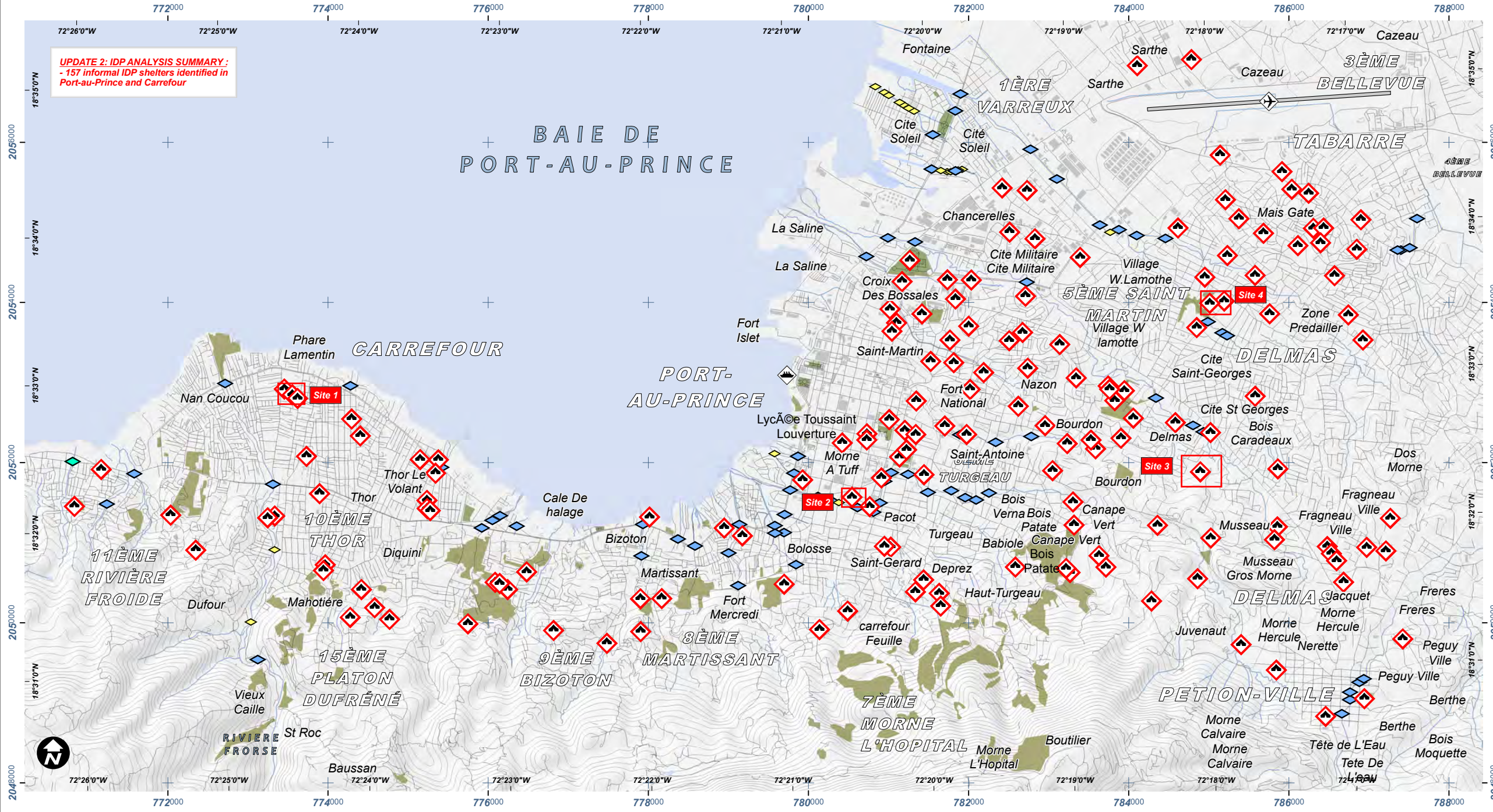


OVERVIEW OF IDP CONCENTRATIONS IN PORT-AU-PRINCE AND CARREFOUR, HAITI (UPDATE 2)

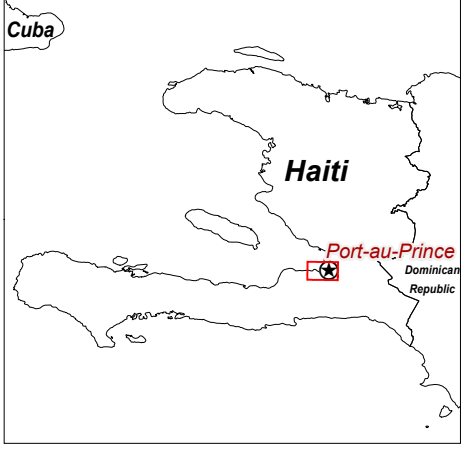
Operational Analysis with GeoEYE-1 Data Acquired 13 January 2010 and QuickBird data acquired 4 March 2008

This map presents an overview of temporary shelter locations of displaced Haitians in Port-au-Prince and Carrefour, as identified in satellite imagery recorded on 13 January 2010. These IDP locations range in size from small clusters of survivors (approx 20-50) to large concentrations numbering in the low thousands. Locations are commonly situated in open areas away from unstable buildings, in parks, sport fields, church compounds and grassy medians of main roads. Four case examples are shown in the imagery. This is a preliminary analysis & has not yet been validated in the field. Please send ground feedback to UNITAR / UNOSAT.

Earthquake 7.0M 17 January 2010 (21:00:00 UTC)
Version 2.0
Glide No: EQ-2010-000009-HTI



UPDATE 2: IDP ANALYSIS SUMMARY:
- 157 informal IDP shelters identified in Port-au-Prince and Carrefour



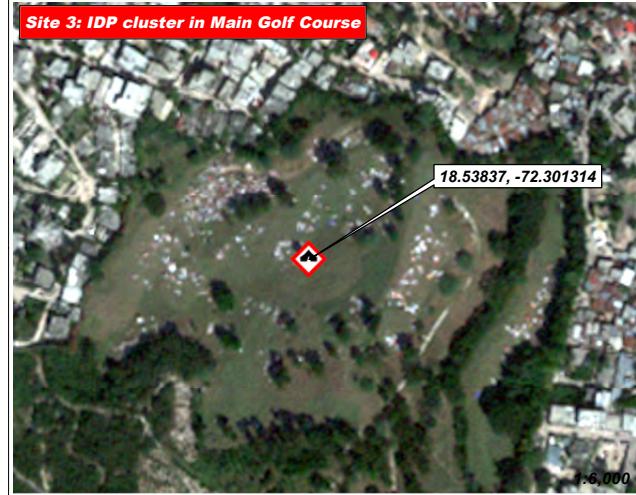
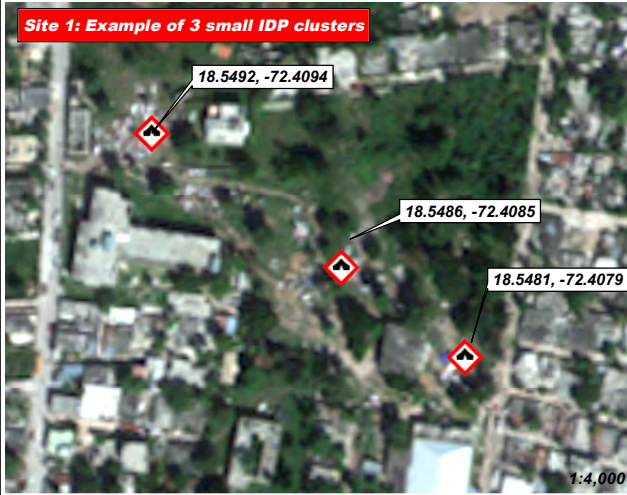
Legend

- Likely Informal IDP Site
- Airfield
- Port
- Bridge
- Culvert
- Foot Bridge
- Main Building Complex
- Park / Forest
- River
- Primary Road
- Secondary / Urban Road
- Unpaved / Minor rd
- Railroad

Map Scale for A3: 1:55,000
UTM grid coordinates given in 2km intervals
Elevation contour lines in 20 meter intervals
Background satellite imagery GeoEye-1 13 January 2010

0 250 500 1,000 1,500 2,000 2,500 Meters

Satellite Data (1)..... GeoEye-1
Imagery Dates 13 January 2010
Resolution 50cm
Copyright GeoEye 2009
Satellite Data (2) QuickBird-2
Imagery Date 4 March 2008
Copyright DigitalGlobe
Source Google Earth
Road & Urban Data Open Street Map
Place Names Google Map Maker
Other Data MINUSTAH, USGS, NGA
Elevation Data ASTER GDEM
Source METI & NASA 2009
Analysis UNITAR / UNOSAT
Map Production UNITAR / UNOSAT
Projection UTM Zone 18 North
Datum WGS-84 (EGM-96)



Map Data © 2009 Google - Improve with Google Map Maker
The depiction and use of boundaries, geographic names and related data shown here are not warranted to be error-free nor do they imply official endorsement or acceptance by the United Nations. UNOSAT is a program of the United Nations Institute for Training and Research (UNITAR), providing satellite imagery and related geographic information, research and analysis to UN humanitarian & development agencies & their implementing partners.

UNITAR
United Nations Institute for Training and Research

UNOSAT

Contact Information: unosat@unitar.org
24/7 Hotline: +41 76 487 4998
www.unosat.org