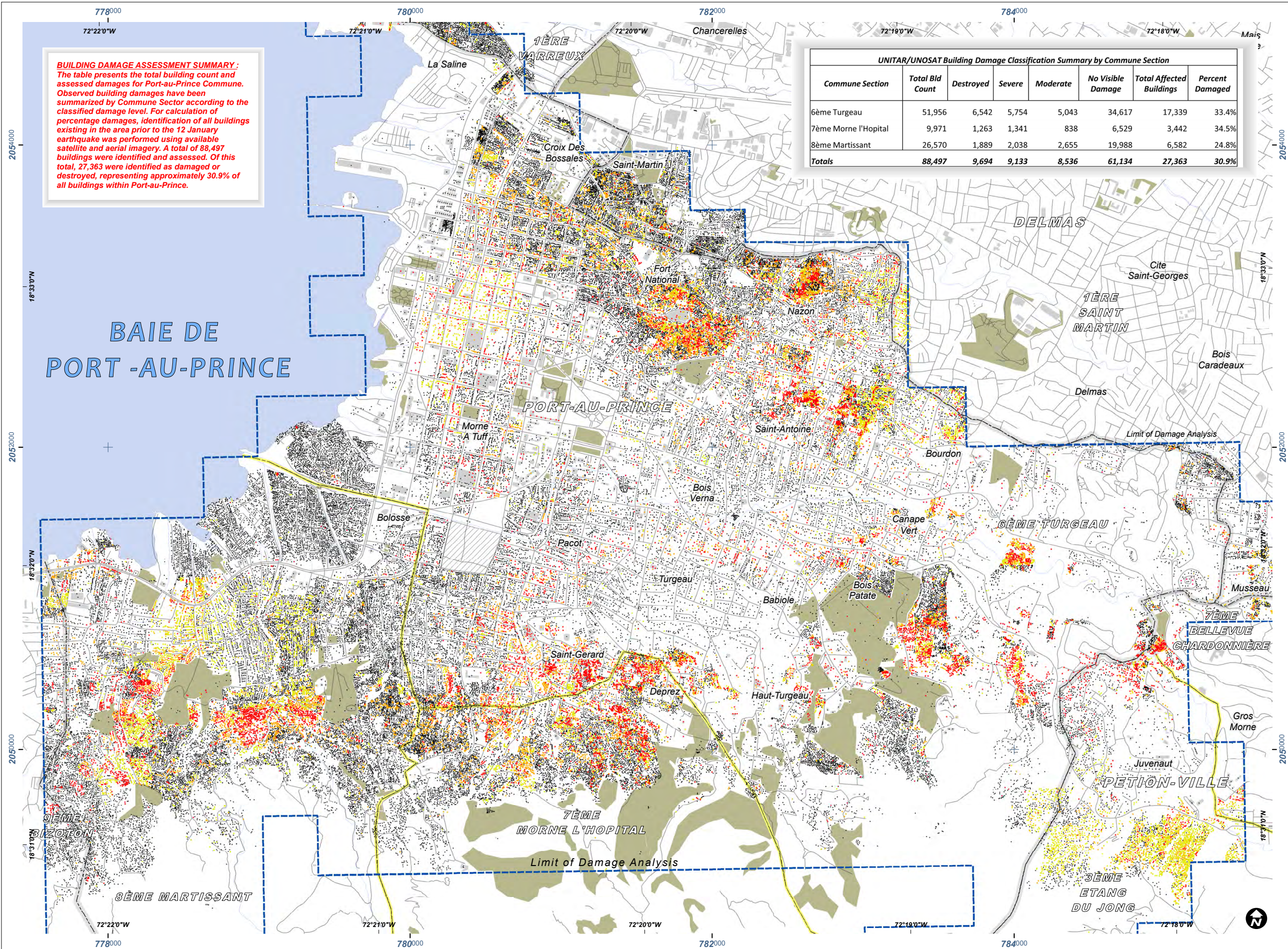


COMPREHENSIVE BUILDING DAMAGE ASSESSMENT FOR PORT-AU-PRINCE COMMUNE, HAITI

Damage analysis of individual buildings based on post-earthquake aerial photos and pre-earthquake satellite imagery

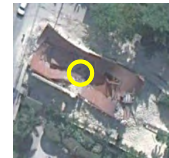
This map presents a total building count and damages as assessed from both satellite and aerial survey imagery covering the Commune of Port-au-Prince. Damaged buildings were classified according to visually-assessed damage levels and summarized in a table by Commune Sector. This work is done at the request of UNDP, and in support of the UN-led efforts in the aftermath of the Haiti earthquake. Swisstopo provided extensive pre-crisis building data in direct technical support of this UN damage analysis. Initial reference data were received from collaborative centers (European Commission JRC with the support of the Stability Instrument; Serit/Space Charter) and other supporting entities (ITHACA, DLR, OSM). This analysis will be validated in the field during PDNA and recovery activities.

Earthquake 7.0M
3 February 2010 (20:30:00 UTC)
Version 1.0
Glide No: EQ-2010-000009-HTI



UNITAR/UNOSAT Building Damage Classification Summary by Commune Section						
Commune Section	Total Bld Count	Destroyed	Severe	Moderate	No Visible Damage	Percent Damaged
6ème Turgeau	51,956	6,542	5,754	5,043	34,617	17,339 33.4%
7ème Morne l'Hopital	9,971	1,263	1,341	838	6,529	3,442 34.5%
8ème Martissant	26,570	1,889	2,038	2,655	19,988	6,582 24.8%
Totals	88,497	9,694	9,133	8,536	61,134	27,363 30.9%

Damage legend key:



DESTROYED :
All or most of building structure collapsed



SEVERE DAMAGE :
Part of building structure collapsed, such as part of roof or one or more fallen walls



MODERATE DAMAGE :
Limited damage observed to building, or no damage observed but immediately adjacent to destroyed building



NO VISIBLE DAMAGE
Assessed building does not appear to be damaged

The four damage Levels: Destroyed, Severe Damage, Moderate Damage and No Visible Damage. This damage assessment was made with standard image interpretation methods. Detected damages are likely to represent minimum estimates; actual building damages may be larger due to limits in spatial and spectral resolution of available satellite and aerial imagery.

Building Point Classification

- Destroyed
- Severe Damage
- Moderate Damage
- No Visible Damage

- Main Building Complex
- Park / Forest
- Commune Boundary
- Section Boundary
- Water Body
- Cemetery
- Primary / Secondary Rd
- Analysis Extent

Map Scale for A3: 1:25,000

UTM grid coordinates given in 2km intervals

Meters	
0	125 250 500 750 1,000
Satellite Data	WorldView-2
Imagery Dates	19 Dec.2009 / 7-15 Jan. 2010
Resolution	50cm
Copyright	DigitalGlobe
Aerial Photos	NOAA / Google
Imagery Date	18 Jan / 21 Jan 2010
Copyright	NOAA / Google
Source	ERDAS APOLLO WMS
Building Data	Swisstopo / UNOSAT
Road & Urban Data	Open Street Map
Place Names	OCHA, Google Map Maker
Other Data	MINUSTAH, USGS, NGA
Elevation Data	ASTER GDEM
Source	METI & NASA 2009
Damage Analysis	UNITAR / UNOSAT
Map Production	UNITAR / UNOSAT
Projection	UTM Zone 18 North
Datum	NAD-83

The depiction and use of boundaries, geographic names and related data shown here are not warranted to be error-free nor do they imply official endorsement or acceptance by the United Nations. UNOSAT is a program of the United Nations Institute for Training and Research (UNITAR), providing satellite imagery and related geographic information, research and analysis to UN humanitarian & development agencies & their implementing partners.